



(Deemed to be University)

Where there is space for every dream



NITTE INSTITUTE OF SPEECH & HEARING

Deralakatte, Mangaluru - 575 018, Karnataka, India

Justice **K S Hegde**

Founder (1909 - 1990)



About the Management

Nitte Education Trust was founded in 1979 by Late Justice K S Hegde, former Judge of the Supreme Court of India and Speaker of the Lok Sabha. Justice Hegde strongly believed that education is pivotal to the overall progress of a community and this vision led to the birth of Nitte Education Trust. His legacy is being continued by his son, Mr N Vinaya Hegde.

About Nitte University

Nitte University has been consistently ranked among the top 100 Universities in India in the National Institutional Ranking Framework (NIRF) by the Ministry of Education, GoI and is accredited with A+ Grade by the National Assessment and Accreditation Council of India (NAAC). The University offers undergraduate, postgraduate and doctoral programs in a variety of disciplines. International affiliations, encouragement to academic research, a strong emphasis on sustainability and a healthy student connect are the hallmarks of this growing university.



Hall of Fame



NITTE

(Deemed to be University)

NAAC
ACCREDITATION
A+ GRADE



NITTE

(Deemed to be University)

NIRF UNIVERSITY
RANKINGS 2024
66



NITTE

(Deemed to be University)

THE WORLD UNIVERSITY
RANKINGS 2025
1501+



NITTE

(Deemed to be University)

QS SOUTHERN ASIA
RANKINGS 2024
143



NITTE

(Deemed to be University)

THE IMPACT
RANKINGS 2024
301-400 BAND



ABSMIDS

NIRF DENTAL
RANKINGS 2024
6



NGSMIPS

NIRF PHARMACY
RANKINGS 2024
41



NMIT

NIRF ENGINEERING
RANKINGS 2024
101-150 BAND



NMAMIT

NIRF ENGINEERING
RANKINGS 2024
151-200 BAND



NGSMIPS

NBA
ACCREDITED
BPHARM



NMAMIT

NBA
ACCREDITED
UG PROGRAMS



NMIT

NBA
ACCREDITED
UG PROGRAMS

ABOUT THE INSTITUTION

Nitte Institute of Speech & Hearing (NISH) established in 2007 is a constituent college of Nitte Deemed to be University and is approved by the Rehabilitation Council of India (RCI), New Delhi. NISH offers Bachelor in Audiology & Speech-Language Pathology (BASLP), Master of Science in Speech-Language Pathology (MSc SLP), Master of Science in Audiology (MSc Aud) and PhD in Speech & Hearing.

The primary goal of the institute is to cultivate passionate individuals into compassionate rehabilitation professionals. These professionals are dedicated to enhancing the quality of life for individuals dealing with hearing, balance, speech-language and swallowing disorders. Through access to the outstanding clinical facilities at the 1200-bed multi-specialty Justice K S Hegde Charitable Hospital, students receive comprehensive exposure and high-quality training essential for their profession.



FACULTY



Principal

Ms Shwetha MASLP

has over 2 decades of clinical, academic and administrative experience.

The complete list of teaching faculty is available on nitte.edu.in/nish



PROGRAMS

B.ASLP (AUDIOLOGY & SPEECH- LANGUAGE PATHOLOGY)

Intake: 30 | Duration: 4 years

The program consists of 3 years of academics followed by 1 year of internship. Each academic year consists of 2 semesters.

Eligibility

Pass in Class 12 with not less than 50% marks in aggregate in Physics, Chemistry & any one of Biology / Mathematics / Computer Science / Statistics / Electronics / Psychology with English as one of the languages of study.

The candidate should have completed 17 years of age as on 31st December of the year of admission.

Program Content

Semester I

Communication Sciences, Anatomy and Physiology related to Speech-Language & Hearing, Clinical Psychology, Electronics & Acoustics, Linguistics & Phonetics, Indian Constitution & Human Rights, Communicative English, Basic Language: Kannada / Malayalam / Tulu, Audiology Clinicals 1 and Speech-Language Pathology Clinicals 1

Semester II

Speech-Language Pathology, Audiology, Otolaryngology, Neurology, Research Methods & Statistics, Environmental Studies & Gender Equity, Audiology Clinicals 2 and Speech-Language Pathology Clinicals 2

Semester III

Voice & its Disorders, Speech Sound Disorders, Diagnostic Audiology - Behavioural Tests, Amplification Devices, Audiology Clinicals 3 and Speech-Language Pathology Clinicals 3

Semester IV

Motor Speech Disorders in Children, Language Disorders in Children, Diagnostic Audiology - Physiological Tests, Implantable Hearing Devices, Counselling / Basics of Yoga, Audiology Clinicals 4 and Speech-Language Pathology Clinicals 4

Semester V

Fluency & its Disorders, Structural Anomalies & Speech Disorders, Aural Rehabilitation in Children, Pediatric Audiology, Community-Based Rehabilitation / Vocational Training for Persons with Disability, Audiology Clinicals 5 and Speech-Language Pathology Clinicals 5

Semester VI

Motor Speech Disorders in Adults, Language Disorders in Adults, Aural Rehabilitation in Adults, Audiology in Practice, Genetics & Pediatrics / Augmentative & Alternative Communication (AAC), Audiology Clinicals 6 and Speech-Language Pathology Clinicals 6

Semesters VII & VIII

Audiology Clinicals 7 & 8 and Speech-Language Pathology Clinicals 7 & 8

Admission Procedure

Students seeking admission to BASLP program are required to submit the Admission Query Form available on apply.nitte.edu.in

On receipt of the same, the Admission Section will guide the students with the process of registration and admission. Admission to the BASLP program is based on merit in the qualifying examination.

Documents required for admission to BASLP

- Class 10 Marks Card (Original + 2 attested copies)
- Class 12 Marks Card (Original + 2 attested copies)
- Transfer Certificate from the institution last studied (Original + 2 attested copies)
- Conduct Certificate from the institution last studied (Original)
- Migration Certificate from the Board of the institution last studied (Original)
- Eligibility Certificate issued by Nitte University (This will be handled by Nitte)
- Physical Fitness Certificate from a registered medical practitioner (Original)
- Blood Group Certificate (Original)
- Aadhaar card copy of the student
- Photographs: Recent colour photo with white background, of resolution 300-600 dpi - Passport size 5 Nos. (35mm x 45mm) & Stamp size 5 Nos. (20mm x 25mm)



MSc Speech-Language Pathology

Intake: 12 | Duration: 2 years

MSc Audiology

Intake: 12 | Duration: 2 years

Eligibility

BASLP / BSc (Speech & Hearing) degree from any recognized university, approved by the Rehabilitation Council of India, with not less than 55% marks in aggregate.



Admission Procedure

Students seeking admission to MSc programs are required to submit the Admission Enquiry Form available on apply.nitte.edu.in

On receipt of the same, the Admission Section will guide the students with the process of registration and admission. Admission to the MSc programs is based on merit in the qualifying examination.

Documents required for admission to MSc programs

- Class 10 Marks Card (Original + 2 attested copies)
- Degree Marks Cards of all years (Original + 2 attested copies)
- Internship Completion Certificate (Original + 2 attested copies)
- Degree Certificate issued by the University (Original + 2 attested copies)
- Transfer Certificate from the institution last studied (Original + 2 attested copies)
- Conduct Certificate from the institution last studied (Original)
- Migration Certificate from the University of the institution last studied (Original)
- Eligibility Certificate issued by Nitte University (This will be handled by Nitte)
- Physical Fitness Certificate from a registered medical practitioner (Original)
- Blood Group Certificate (Original)
- Aadhaar card copy of the student
- Photographs: Recent colour photo with white background, of resolution 300-600 dpi - Passport size 5 Nos. (35mm x 45mm) & Stamp size 5 Nos. (20mm x 25mm)

PhD

Visit nitte.edu.in/phd.php for more information.

Fee Structure

The fee structure of all programs is available on nitte.edu.in under 'Program Fee'.

Class Commencement

The undergraduate & postgraduate programs commence on the date prescribed by the University, generally in August.



Career Opportunities

Graduates have the opportunity to embark on careers as Audiologists or Speech-Language Pathologists in a variety of settings, including hospitals, institutes, speech & hearing clinics, hearing aid centers and special schools for individuals with disabilities. Alternatively, they can establish their own private practice. Those with a passion for academia can pursue advanced studies and employment in educational institutions.

For postgraduates, avenues expand further as they can specialize as Audiologists and/or Speech-Language Pathologists, finding employment in settings such as speech & hearing clinics, hearing aid & cochlear implant centers, special schools, regular schools, industrial setups, government or private hospitals or opt for private practice. Additionally, they can pursue academic and research roles in educational institutions, both in India and abroad. Employment opportunities for postgraduates extend to countries like the USA, Canada, Australia, New Zealand and Gulf countries.

FACILITIES

■ Clinical Training

Students are trained at the 1200-bed multi-speciality Justice K S Hegde Charitable Hospital. Besides this, they are posted to work in reputed Hearing Aid Centres, Hospitals, Speech-Language Rehabilitation Centres, Special Schools for the disabled etc.

■ Sports

The campus has a 24,000 sqft Indoor Sports Complex, which houses a floodlit basketball court, four shuttle badminton courts, a tennis court, a volleyball court and a throwball court. An air-conditioned gymnasium and multi-purpose playground with a running track are also available in the campus. A full-time physical education teacher is available in the institute to train the students in sports activities.

■ Campus Amenities

A commercial bank with ATM, cafeterias, general store, Wi-Fi connectivity and round-the-clock security are available in the campus.





■ Library

The library is well-equipped with an extensive collection of textbooks and reference materials, supported by e-library facilities and free Wi-Fi access. Students also have access to the library of the Nitte University's Medical college, K S Hegde Medical Academy.

■ Student Support

Orientation programs for fresh entrants and regular training programs for students are conducted. Slow learners are identified and additional input is provided by teachers. A mentorship program is in place to guide the students achieve their full potential.

■ Hostel

The college provides safe, secure, clean and well-furnished hostels with hygienic food. The hostel mess is maintained by an app called "Paaka-shale" which gives students the freedom to pre-book their favourite vegetarian and non-vegetarian dishes apart from their regular menu. Recreation facilities include indoor & outdoor games and television. A resident warden is available to ensure that students are safe. Healthcare requirements like doctor-on-call facility to handle medical emergencies are available. The hostel has zero tolerance towards ragging, use of tobacco and drug abuse. Security personnel are placed round-the-clock in all the hostels.



■ Medicare

Students have easy access to medical and dental treatment at the NABH accredited 1200-bed multispecialty Justice K S Hegde Charitable Hospital and A B Shetty Dental College Hospital, both located in the campus.



■ Student Wellness Centre

The Wellness Centre aims to create a stress-free campus by promoting a healthy lifestyle and positive mental health amongst students. It provides mentoring & counselling services for students in a confidential and supportive environment. The Centre assists students in resolving academic, personal and social concerns.



■ Conveyance

Free transport facilities are provided to students through a fleet of buses plying regularly from various points in the city to the college and back. The campus also provides bicycles to commute within the campus. This is an initiative taken to maintain a healthy lifestyle and a green campus.



JUSTICE K S HEGDE CHARITABLE HOSPITAL

The 1200-bed NABH-accredited multi-specialty Justice K S Hegde Charitable Hospital serves as the teaching hospital for K S Hegde Medical Academy and provides the requisite training to students of health science programs. Renowned for its commitment to providing high-quality treatment at an affordable cost, this leading hospital plays a vital role in Mangaluru's healthcare landscape.

Equipped with all modern diagnostic and therapeutic facilities, the hospital conducts critical surgeries like valve replacement, bypass surgery, neonatal surgery, cancer surgery, paediatric surgery, cardiac surgery, laparoscopic surgery, arthroscopic surgery, joint replacement, complex spine and brain surgery, micro-laryngeal surgery and endoscopic sinus surgery.



Broad Specialties

- General Medicine
- General Surgery
- Anaesthesiology
- Respiratory Medicine
- Orthopaedics
- Obstetrics & Gynaecology
- Paediatrics
- Psychiatry
- Dermatology, Venereology & Leprosy
- Ophthalmology
- Radiodiagnosis
- Otorhinolaryngology

Clinical Facilities

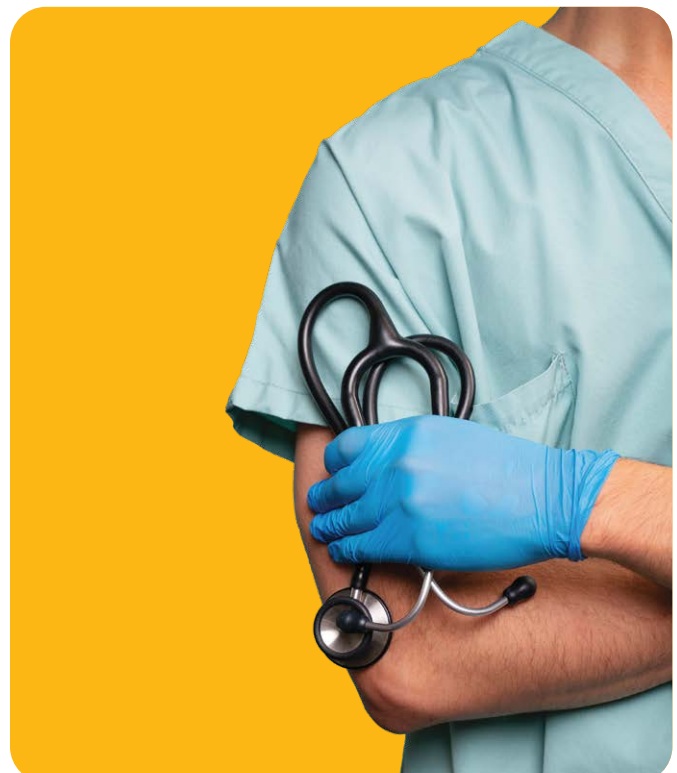
- Emergency Medicine
- Physical Medicine & Rehabilitation
- Audiology
- Speech Therapy
- Physiotherapy
- Pharmacy Practice
- Nutrition & Dietetics

Super Specialties

- Cardiology
- Cardiothoracic Surgery
- Neurology
- Neurosurgery
- Nephrology
- Urology
- Paediatric Surgery
- Oncology & Onco Surgery
- Radiotherapy
- Endocrinology
- Medical & Surgical Gastroenterology
- Plastic Surgery
- Breast & Endocrine Surgery
- Nuclear Medicine & Theranostics
- Fertility & Reproductive Medicine
- Craniofacial Surgery

Nitte Centre for Integrative Medicine & Research (CIMR)

This Centre combines Yoga, Meditation, Ayurveda and Naturopathy (AYUSH) with science, to provide clinical services and research on lifestyle and gut-related disorders. The Centre provides yoga, ayurveda and naturopathy based integrative therapy for a variety of lifestyle diseases. In addition, lectures / workshops on diet and nutrition are held to educate individuals on health and fitness. Prevention, cure and rehabilitation through integrative medicine is the Nitte CIMR's mission.



Other Facilities

- Regular and air-conditioned rooms and suites
- Special clinic - 8 am to 5 pm
- Patient care and Counselling cell
- Sleep study and day-care facilities
- Uninterrupted Oxygen supply with dedicated PSA O₂ plant
- 19 modern operation theatres with advanced life-saving facilities
- Fully equipped 120-bed closed ICU, ICCU, NICU, PICU, SICU and Burns Unit
- 24-hour Emergency and Trauma Centre with attached OT, diagnostic and life support systems like ultrasound, x-ray, ventilators and monitors
- 24-hour clinical laboratory (NABL accredited), blood bank and pharmacy services
- Advanced Cardiac Cath lab and Dialysis unit
- Organ transplant services
- 1.5 Tesla MRI unit, Spiral C-Arm with IITV and fluoroscopy, 128 & 16 Slice CT, Slice 4D Ultrasound with colour doppler, Computed & Digital Radiography and Mammography with 3D Tomosynthesis
- Centre for Cancer Treatment and Research
- IVF Centre for Assisted Reproductive Therapy
- Centre for Craniofacial Surgery
- Advanced Neurology Lab
- Comprehensive Tissue Bank
- Interventional Radiology
- PET/CT





- Non-invasive procedures: 4D Transthoracic and 4D Transesophageal Echocardiography, TMT, Holter, ECG and Ambulatory BP
- Diagnostic & therapeutic interventional procedures: Coronary & peripheral angiograms, Coronary & peripheral angioplasties, Carotid angioplasties, Pericardiocentesis, Embolization procedures and Renal interventions
- Congenital heart disease interventions: Device implantation of ASD, VSD, PDA & others
- Electrophysiology studies, Pacemaker implantation, Cardiac resynchronization therapy & Implantable Cardioverter Defibrillator (ICD)
- Valvuloplasty and TAVR
- Stent graft placement for aortic aneurysms and aortic dissections



Cardiovascular Thoracic Surgery

Cardiac Surgeries

- Coronary artery bypass graft
- Aortic valve replacement
- Mitral valve replacement / repair
- Tricuspid valve repair
- Double valve replacement
- Repair of ASD and VSD
- Repair of Cyanotic congenital heart disease
- Repair of aortic aneurysm
- Surgery heart failures





Thoracic Surgeries

- Lung resections
- Decortication
- Resection of Mediastinal tumours
- Repair of eventration diaphragm
- Excision of chest wall tumours



Vascular Surgeries

- Aortobifemoral grafting
- Femoral popliteal grafting
- Repair of aneurysm
- Endovascular Aneurysm Repair (EVAR)



Nephro Urology

- Modern haemodialysis unit and a renal ICU
- Renal transplants
- Laser Prostatectomy
- Laser Lithotripsy
- URS (Ureterorenoscopy) and endoscopic surgery to remove ureteral stones
- Transurethral surgeries to remove prostate and bladder tumours and AV fistula surgery for dialysis patients



Paediatric Surgery

- Neonatal surgeries
- Paediatric urology
- Specialized laparoscopic setup for paediatric abdominal and thoracic surgery
- State-of-the-art Neonatal Intensive Care Unit (NICU) and Paediatric Intensive Care Unit (PICU)



Nuclear Medicine

- PET/CT
- Dual head gamma camera
- Radionuclide therapy
- Nuclear medicine stress test



Neurology

- Epilepsy Clinic
- Movement Disorder Clinic
- EEG machine and electrophysiology equipment
- Multiple Sclerosis Research Unit
- Advanced Neurological Research Centre



Neurosurgery

- Neuro OT with C-arm, microscope, neuro endoscope & state-of-the-art equipment for minimally invasive and stereotactic surgeries supported by a full-fledged Neuro-ICU (NRICU)
- Surgeries to treat brain tumours, aneurysms, complex spine surgeries, endoscopic brain and spinal disorder



Oncology

- Integrated Cancer Centre catering to all needs of cancer patients
- Comprehensive cancer care including advanced Radiotherapy treatment, Medical Oncology
- Surgical Oncology and Palliative care



Radiation Oncology

- Two-Dimensional Radiotherapy (2DRT)
- Three-Dimensional Radiotherapy (3DCRT)
- Intensity Modulated Radiotherapy (IMRT)
- Image Guided Radiotherapy (IGRT)
- Rapid ARC Radiotherapy
- PET/CT



Medical Oncology

- Chemotherapy (OP and IP basis)
- Bone marrow aspiration and biopsy
- Bone marrow transplant
- Immunotherapy (OP and IP basis)
- Intrathecal chemotherapy



Surgical Oncology

- Head & Neck Onco surgery
- Musculoskeletal surgery
- Breast and Endocrine Surgery
- Thoracoscopic (VATS) Surgery: Oesophageal cancer, Lung and Mediastinal tumours
- Laparoscopic Surgery: Stomach, Pancreas, Colorectal, Gynaecological & Urological cancers
- Intersphincteric resection (ISR): Sphincter preserving surgery for low rectal cancer



Endocrinology

- Diabetes care program for retinopathy, nephropathy, neuropathy, ischemic heart disease and management of gestational diabetes
- Paediatric diabetes clinic
- Treatment for obesity and lipid disorders, metabolic bone disease, disorders of the ovaries and testes, endocrine disorders of infertility, hirsutism, parathyroid and adrenal disorders



Plastic Surgery

- Repair and reconstructive surgeries
- Microvascular surgery
- Cosmetic surgery
- Burn management
- Diabetic foot management
- Congenital deformities correction



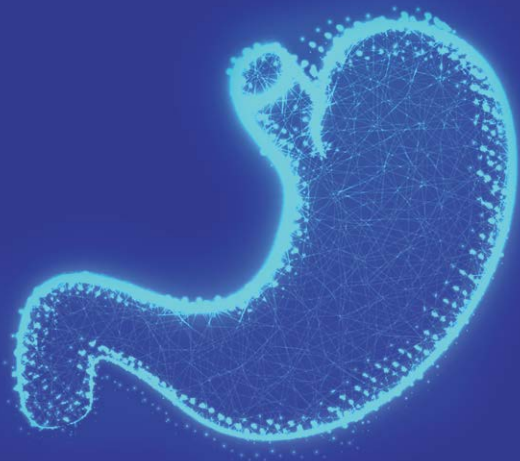
Craniofacial Surgery

- Treatment of cleft and craniofacial anomalies and rhinoplasty
- Cleft and craniofacial care through treatment related to paediatrics, pedodontics, orthodontics and speech therapy



Medical Gastroenterology & Hepatology

- Endoscopic Retrograde Cholangiopancreatography (ERCP): Detection & treatment of pancreatic & biliary disease
- Endoscopic Ultrasonography (EUS): Detection & Surveillance of pancreatic & biliary cancer
- Upper GI Endoscopy: Esophageal and Gastric cancer detection & surveillance
- Colonoscopy: Colon cancer detection & surveillance
- Therapeutic Endoscopy: Endoscopic removal of polyps in stomach, colon & rectum
- Cystogastrostomy for pancreatic pseudocyst
- Stenting for Advanced Oesophageal, Gastroduodenal, Biliary, Pancreatic and Colonic cancers
- Argon plasma coagulation for haemostasis and fulguration of unresectable tumours
- Oesophageal & anorectal manometry
- 24-hour pH impedance testing





Surgical Gastroenterology & Hepato-Pancreato-Biliary Surgery

- Liver resections for tumours/cancers
- Liver transplantation
- Pancreatic surgeries for cancer/tumours and chronic pancreatitis
- Laparoscopic surgeries for cancer and non-cancerous diseases of oesophagus, stomach, small & large intestines and rectum
- Advanced laparoscopic surgeries for Gastroesophageal Reflux Disease (GERD), hiatal hernia and achalasia cardia
- Laparoscopic surgeries for gallstones, spleen and pancreas
- Laparoscopic weight loss/bariatric surgeries

Specialty Departments



General Medicine

- Modern diagnostic equipment and facilities like ICU and ICCU with monitors, ventilators & defibrillators
- Speciality clinics for diabetes, hypertension and geriatrics



General Surgery

- Well-equipped modern operating theatres
- Latest instruments and equipment such as laparoscopes and endoscopes
- Routine procedures as well as advanced laparoscopic, thoracoscopic, gastrointestinal, hepatobiliary and pancreatic surgeries



Orthopaedics

- Tissue Bank to support bone grafts, tendon grafts, amnion and skin grafts
- Trauma care
- Complete arthroscopy instruments for keyhole surgeries
- Robotic hip and knee replacement surgeries



Ophthalmology

- Equipped with Slit Lamps, A-scan and Humphrey Field Analyser
- 24-hour eye bank
- Speciality clinics for cataract surgery and retinal defects
- Corneal transplant



Otorhinolaryngology

- Treatment of tumours and cancers of the head and neck area and skull base surgery
- Micro-ear surgery, cochlear implant, micro-laryngeal surgery, endoscopic sinus surgery, video laryngoscopy, rigid and flexible bronchoscopy & esophagoscopy equipped with stroboscopy for diagnosing voice disorders & electronystagmography



Obstetrics & Gynaecology

- Fertility clinic - IVF clinic for Assisted Reproductive Therapy
- Cancer screening
- High-risk pregnancy management
- Menopause clinic



Respiratory Medicine

- Anti-tubercular treatment (DOTS)
- Treatment of naso bronchial allergy and asthma
- Pulmonary function test and arterial blood gas analysis
- Bronchoscopy
- Sleep lab
- Endoscopic Bronchial Ultrasonography



Paediatrics

- Fully-equipped Neonatal Intensive Care Unit (NICU)
- Paediatric Intensive Care Unit (PICU)
- Epilepsy clinic, high-risk new-born clinic, development clinic, asthma clinic, well-baby & immunization clinic
- Special nephrology and nephro-urology clinic
- Genetic counselling, Genetics lab



Dermatology

- Diode Laser for permanent hair reduction
- CO2 Laser for acne scar treatment, skin resurfacing and keloid treatment
- Spectra XT Laser for melasma treatment, tattoo, birthmark and mole removal
- Phototherapy unit
- Dermato-surgical procedures: Biopsies, surgeries for vitiligo & cryosurgery



Radiodiagnosis

- 1.5 Tesla MRI unit
- 128 Slice MDCT scan with CT angiogram & 3D reconstruction facilities
- PET/CT
- 16 Slice MDCT scan with CT angiogram & 3D reconstruction facilities
- C-arm with image intensifier
- 4D Ultrasound with colour doppler unit
- Mammography unit with 3D tomosynthesis
- 6 X-ray machines
- 800 mA unit with IITV and fluoroscopy
- Digital Radiography



Programs at Nitte

COLLEGES	PROGRAMS OFFERED
NMAM Institute of Technology (Nitte)	BTech: Artificial Intelligence & Data Science Artificial Intelligence & Machine Learning Biotechnology Civil Computer & Communication Computer Science Computer Science (Cyber Security) Electrical & Electronics Electronics & Communication Electronics & Communication (Advanced Communication Technology) Electronics (VLSI Design & Technology) Information Science Mechanical Robotics & Artificial Intelligence MTech MCA PhD
Nitte Meenakshi Institute of Technology (Bengaluru)	BTech: Aeronautical Artificial Intelligence & Data Science Artificial Intelligence & Machine Learning Civil Computer Science Computer Science & Business Systems Electrical & Electronics Electronics & Communication Electronics (VLSI Design & Technology) Information Science Mechanical Robotics & Artificial Intelligence MTech MCA MBA PhD BSc (Honors): Civil Aviation Pilot Training Civil Aviation Flight Dispatcher
K S Hegde Medical Academy (Mangaluru)	MBBS MD.MS MCh (Urology) PhD Fellowship: Interventional Pulmonology Neuroimmunology Reproductive Medicine
A B Shetty Memorial Institute of Dental Sciences (Mangaluru)	BDS MDS Fellowship in Oral Implantology PhD
Nitte Institute of Allied Health Sciences (Mangaluru)	BSc & MSc: Anesthesia & OT Technology Medical Imaging Technology Medical Lab Technology Respiratory Therapy BSc: Renal Dialysis Technology Radiation Therapy Technology MSc: Clinical Embryology MPH (Public Health) MHA (Hospital Administration) PG Diploma: Computed Tomography Technology MRI Technology PhD
NGSM Institute of Pharmaceutical Sciences (Mangaluru)	DPharm BPharm PharmD PharmD (PB) MPharm PhD
Nitte College of Pharmaceutical Sciences (Bengaluru)	BPharm MPharm

Nitte Usha Institute of Nursing Sciences (Mangaluru)	BSc Nursing PB BSc Nursing MSc Nursing PhD
Nitte Institute of Physiotherapy (Mangaluru)	BPT MPT PhD
Nitte Institute of Speech & Hearing (Mangaluru)	B.ASLP (Audiology & Speech-Language Pathology) MSc: Speech-Language Pathology Audiology PhD
Nitte University Centre for Science Education & Research (Mangaluru)	BSc (Honors) Biomedical Science MSc: Biomedical Science Bioinformatics Cancer Biology Food Science & Technology Microbiology Biotechnology Marine Biotechnology One Year MSc PhD
Nitte Institute of Architecture (Mangaluru)	BArch
Nitte School of Architecture, Planning & Design (Bengaluru)	BArch BPlan BDes MPlan
Nitte Institute of Communication (Mangaluru)	BA (Honors) Media & Communication PhD
Nitte Institute of Hospitality Services (Mangaluru)	BSc (Honors) Hotel Management BSc (Honors) Culinary Arts & Management BSc (Honors) Airlines, Tourism & Hospitality
Justice K S Hegde Institute of Management (Nitte)	MBA PhD
Nitte School of Management (Bengaluru)	PG Diploma in Management

**Nitte
School of Fashion
Technology & Interior
Design (Bengaluru)**

Diploma: Fashion Design | Interior Design
BDes: Fashion Design | Interior Design
MDes: Fashion Design | Interior Design

**Dr NSAM
First Grade College
(Nitte)**

BBA (Business Analytics | Logistic & Supply Chain Mgt | Financial Mgt | Marketing Mgt | HR Mgt)
BCA (Data Analytics | IT | AI & Machine Learning)
BCom (Financial Mgt | Banking, Financial Services & Insurance)
BCom Professional (Financial Mgt | Banking, Financial Services & Insurance)
BSc (Data Analytics | IT | AI & Machine Learning)

**Nitte
Institute of Professional
Education
(Mangaluru)**

BCA (Artificial Intelligence & Machine Learning | Cyber Security & Digital Forensics | Cloud Technology & DevOps)
BBA (Business Analytics | International Business | Banking, Financial Services & Insurance)

**Dr NSAM
First Grade College
(Bengaluru)**

BCA | BBA (General | Aviation Management)
BCom (General | Professional | Business Data Analytics | Logistics & Supply Chain Management)

**Nitte
Rukmini Adyanthaya
Memorial Polytechnic
(Nitte)**

Diploma in Engineering: Civil | Computer Science | Electrical & Electronics | Electronics & Communication | Mechanical | Apparel Design & Fabrication Technology

apply.nitte.edu.in



Redefining Communication, Restoring Lives



The Director (Administration)
Nitte (Deemed to be University)
Medical Sciences Complex, Deralakatte,
Mangaluru - 575 018, Karnataka, India

☎ 95131 88844 | 94808 12312
info@nitte.edu.in | nitte.edu.in |    

Scan to Apply Now

