



# NITTE

(Deemed to be University)

*Where there is space for every dream*



# NITTE INSTITUTE OF PHYSIOTHERAPY

Deralakatte, Mangaluru - 575 018, Karnataka, India

# Justice **K S Hegde**

Founder (1909 - 1990)



## **About the Management**

Nitte Education Trust was founded in 1979 by Late Justice K S Hegde, former Judge of the Supreme Court of India and Speaker of the Lok Sabha. Justice Hegde strongly believed that education is pivotal to the overall progress of a community and this vision led to the birth of Nitte Education Trust. His legacy is being continued by his son, Mr N Vinaya Hegde.

## **About Nitte University**

Nitte University has been consistently ranked among the top 100 Universities in India in the National Institutional Ranking Framework (NIRF) by the Ministry of Education, GoI and is accredited with A+ Grade by the National Assessment and Accreditation Council of India (NAAC). The University offers undergraduate, postgraduate and doctoral programs in a variety of disciplines. International affiliations, encouragement to academic research, a strong emphasis on sustainability and a healthy student connect are the hallmarks of this growing university.





# Hall of Fame



**NITTE**

(Deemed to be University)

**NAAC  
ACCREDITATION  
A+ GRADE**



**NITTE**

(Deemed to be University)

**NIRF UNIVERSITY  
RANKINGS 2024  
66**



**NITTE**

(Deemed to be University)

**THE WORLD UNIVERSITY  
RANKINGS 2025  
1501+**



**NITTE**

(Deemed to be University)

**QS SOUTHERN ASIA  
RANKINGS 2024  
143**



**NITTE**

(Deemed to be University)

**THE IMPACT  
RANKINGS 2024  
301-400 BAND**



**ABSMIDS**

**NIRF DENTAL  
RANKINGS 2024  
6**



**NGSMIPS**

**NIRF PHARMACY  
RANKINGS 2024  
41**



**NMIT**

**NIRF ENGINEERING  
RANKINGS 2024  
101-150 BAND**



**NMAMIT**

**NIRF ENGINEERING  
RANKINGS 2024  
151-200 BAND**



**NGSMIPS**

**NBA  
ACCREDITED  
BPHARM**



**NMAMIT**

**NBA  
ACCREDITED  
UG PROGRAMS**



**NMIT**

**NBA  
ACCREDITED  
UG PROGRAMS**

# ABOUT THE INSTITUTION

Nitte Institute of Physiotherapy was established in 1997. It offers undergraduate, postgraduate and doctoral programs in Physiotherapy. It is a constituent college of Nitte (Deemed to be University), Mangaluru and is recognized by the Indian Association of Physiotherapists (IAP).

## ABOUT PHYSIOTHERAPY

Physiotherapy has created a niche for itself as a leading healthcare profession that improves health without the use of medicine and surgery. It provides treatment to individuals to develop, maintain and restore maximum movement, allowing them to function efficiently through life. The course has a balanced combination of subjects relating to Physiotherapy & Rehabilitation and includes a substantial component of medical subjects.

Hence, students will acquire skills that will give them the professional competence to treat a range of physical impairments which could be congenital, post-operative or those that occur due to a major trauma.





# FACULTY



## Principal

### Prof (Dr) Dhanesh Kumar K U

holds a doctorate and has more than 2 decades of teaching experience.

The complete list of teaching faculty is available at

[nitte.edu.in/nipt](http://nitte.edu.in/nipt)



# PROGRAMS

## Bachelor of Physiotherapy (BPT)

**Intake :** 100

**Duration :** 4½ years

(including 6 months of compulsory internship)

### Eligibility

Pass in Class 12 with not less than 45% marks in aggregate in Physics, Chemistry & Biology with English as one of the languages of study. The candidate should have completed 17 years of age as on 31st December of the year of admission.

# PROGRAM CONTENT

## Semester 1

- Anatomy 1
- Physiology 1
- Biochemistry 1
- Biomechanics 1

## Semester 2

- Anatomy 2
- Physiology 2
- Biomechanics 2
- Medical Physics
- Psychology & Sociology

## Semester 3

- Pathology & Microbiology
- Exercise Therapy 1
- Electrotherapy 1
- Yoga Therapy 1

## Semester 4

- Pharmacology
- Exercise Therapy 2
- Electrotherapy 2
- Yoga Therapy 2

## Semester 5

- General Medicine
- Orthopaedics & Traumatology
- Orthopedics & Sports Physiotherapy 1
- Cardio-respiratory & General Physiotherapy 1

## Semester 6

- General Surgery
- Orthopedics & Sports Physiotherapy 2
- Cardio-respiratory & General Physiotherapy 2
- Research Methodology & Biostatistics

## Semester 7

- Neurology & Neurosurgery
- Community Medicine
- Neurophysiotherapy 1
- Community Physiotherapy 1
- General Elective
- Project 1

## Semester 8

- Neurophysiotherapy 2
- Community Physiotherapy 2
- Alternative Therapy
- General Elective
- Project 2





# Admission Procedure

Students seeking admission to BPT are required to submit the Admission Query form available on [apply.nitte.edu.in](https://apply.nitte.edu.in)

On receipt of the same, the Admission Section will guide students with the process of registration and admission.

Admission to BPT is based on merit in the qualifying examination.

The fee structure is available on [nitte.edu.in](https://nitte.edu.in) under 'Program Fee'.

## Documents required for admission to BPT

- Class 10 Marks Card (Original + 2 attested copies)
- Class 12 Marks Card (Original + 2 attested copies)
- Transfer Certificate from the institution last attended (Original + 2 attested copies)
- Conduct Certificate from the institution last attended (Original)
- Migration Certificate from the Board of the institution last studied (Original)
- Eligibility Certificate issued by Nitte University (This will be handled by Nitte)
- Physical Fitness Certificate from a registered medical practitioner
- Blood Group Certificate
- Aadhaar card copy of the student
- Photographs: Recent colour photo with white background of resolution 300-600 dpi  
Passport size 5 Nos. (35 mm x 45 mm) & Stamp size 5 Nos. (20 mm x 25 mm)





## Master of Physiotherapy (MPT)

**Intake:** 30

**Duration:** 2 years

### Eligibility

BSc (PT) or BPT degree of 4½ years duration (including 6 months internship) from a recognized university, with not less than 50% marks in aggregate.

## Specializations



Physiotherapy in Neurological & Psychosomatic Disorders



Paediatric Physiotherapy



Physiotherapy in Musculoskeletal Disorders



Physiotherapy in Obstetrics & Gynecology



Sports Physiotherapy



Community Physiotherapy



Physiotherapy in Cardio-respiratory Disorders & Intensive Care

## Admission Procedure

Students seeking admission to MPT are required to submit the Admission Query form available on [apply.nitte.edu.in](https://apply.nitte.edu.in)

On receipt of the same, the Admission Section will guide students with the process of registration and admission.

Admission to MPT is based on merit in the qualifying examination.

The fee structure is available on [nitte.edu.in](https://nitte.edu.in) under 'Program Fee'.



## Documents required for admission to MPT

- Class 10 Marks Card (Original + 2 attested copies)
- BPT / BSc (PT) Marks Cards of all years (Original + 2 attested copies)
- Internship Completion Certificate (Original + 2 attested copies)
- Provisional Degree / Degree Certificate (Original + 2 attested copies)
- Transfer Certificate from the institution last attended (Original + 2 attested copies)
- Conduct Certificate from the institution last attended (Original)
- Migration Certificate from the University last studied (Original)
- Eligibility Certificate issued by Nitte University (This will be handled by Nitte)
- Physical Fitness Certificate from a registered medical practitioner
- Blood Group Certificate
- Aadhaar card copy of the student
- Photographs: Recent colour photo with white background of resolution 300-600 dpi  
Passport size 5 Nos. (35 mm x 45 mm) & Stamp size 5 Nos. (20 mm x 25 mm)

## Class Commencement

BPT/MPT program commences on the date prescribed by the University, generally in August.





## PhD - Interdisciplinary Program

Visit [nitte.edu.in/phd.php](http://nitte.edu.in/phd.php)

for more information

## Certificate Course in Yoga Therapy

Duration: 3 months

## Career Opportunities



Hospitals



Clinics



Rehabilitation Centres



Gymnasiums



Geriatric Homes



Fitness Centres



Industries



Sports Science Centres



Research Centres



Special Schools

Graduates can choose private practice after obtaining the BPT degree. A postgraduate can work in educational and research institutions in India and abroad.

## FACILITIES

### Teaching Hospital

The College is attached to the NABH accredited, 1200-bed, multispecialty Justice K S Hegde Charitable Hospital, for clinical training of the students. Students are also posted to the 23 Satellite Health Centres managed by the Nitte group.





## Skill Lab

Electrotherapy and Exercise Therapy Skill Laboratory facilitates practical demonstration and professional training to the students, required for patient care. The air-conditioned "Patanjali" yoga hall spans 1,650 sq. ft. and accommodates 100 practitioners for yoga sessions. The hall is equipped with a cutting-edge AV system and internet access, offering a modern and convenient space for yoga practice. A well-equipped Gait Lab delivers top-notch training in gait assessment and management for various conditions.

## Research Lab

A cutting-edge research laboratory with equipments such as Extracorporeal Shock Wave Therapy, Laser, Chattanooga Wireless Electrical Stimulator, Unweighing System, EMG etc. provides a wide range of facilities for the research scholars and postgraduates.

## Outreach Activities

The college has 4 Outreach Centres which facilitate community and extension activities for students. These centres provide special training to postgraduates by giving them additional exposure to sports, geriatric care, disability management & recreational rehabilitation.

## Library

A well-stocked library with more than 3500 volumes and access to book banks and online journals.

## Soft Skills Training

The college provides special training in English and Kannada focusing on improving communication skills. It also promotes personality development skills through value-based education and yoga.

## Student Support Service

The college offers all kinds of assistance in obtaining scholarship / financial assistance from the government or private organizations.



## Campus Amenities

The campus includes student centric amenities like Banks, Cafeterias, Convenience Store, ATM and Wi-Fi.

## Hostel

The college provides safe, secure, clean and well-furnished hostels with hygienic food. The Hostel mess has an app 'Paaka Shaale' which provides the facility for the students to pre-book the vegetarian or non-vegetarian dishes of their choice apart from the regular menu. Recreation facilities include indoor and outdoor games and television. A resident warden is available to ensure that students are safe. Healthcare requirements like doctor-on-call facility to handle medical emergencies are available. The hostel has zero tolerance towards ragging, use of tobacco and drug abuse. Security personnel are placed round-the-clock in all the hostels.

## Medicare

Students can avail medical and dental treatment at the NABH accredited, 1200-bed multispecialty Justice K S Hegde Charitable Hospital and the A B Shetty Dental College , located in the campus.

## Student Wellness Centre

The Wellness Centre aims to create a stress-free campus by promoting a healthy lifestyle and positive mental health amongst students. It provides mentoring & counselling services for students in a confidential and supportive environment through professionals. Students experiencing stress related to academic, personal, social or other issues can access counseling assistance by contacting the counselor through helpline provided by the university.

## Conveyance

Free transport facilities are provided to students through a fleet of buses plying regularly from various points in the city to the college and back.

## Sports

The campus has a 24,000 sq ft Indoor Sports Complex, which houses a floodlit basketball court, shuttle badminton courts, a tennis court, a volleyball court and a throwball court. An air-conditioned gymnasium and multi-purpose playground with running track are also available in the campus. A full-time physical education instructor is available in the Institute to train the students in sports activities.



# JUSTICE K S HEGDE CHARITABLE HOSPITAL

The 1200-bed NABH-accredited multi-specialty Justice K S Hegde Charitable Hospital serves as the teaching hospital for K S Hegde Medical Academy and provides the requisite training to students of health science programs. Renowned for its commitment to providing high-quality treatment at an affordable cost, this leading hospital plays a vital role in Mangaluru's healthcare landscape.

Equipped with all modern diagnostic and therapeutic facilities, the hospital conducts critical surgeries like valve replacement, bypass surgery, neonatal surgery, cancer surgery, paediatric surgery, cardiac surgery, laparoscopic surgery, arthroscopic surgery, joint replacement, complex spine and brain surgery, micro-laryngeal surgery and endoscopic sinus surgery.



## Broad Specialties

- General Medicine
- General Surgery
- Anaesthesiology
- Respiratory Medicine
- Orthopaedics
- Obstetrics & Gynaecology
- Paediatrics
- Psychiatry
- Dermatology, Venereology & Leprosy
- Ophthalmology
- Radiodiagnosis
- Otorhinolaryngology

## Clinical Facilities

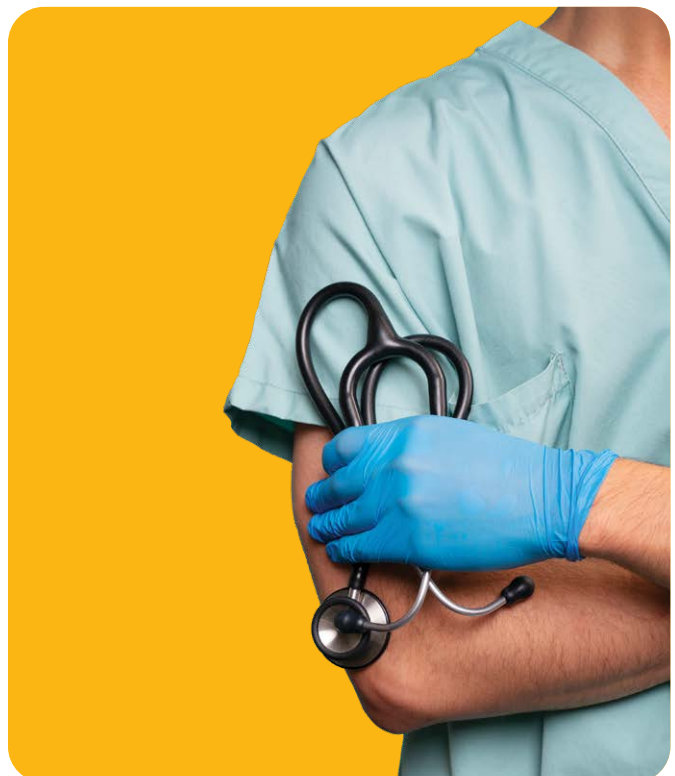
- Emergency Medicine
- Physical Medicine & Rehabilitation
- Audiology
- Speech Therapy
- Physiotherapy
- Pharmacy Practice
- Nutrition & Dietetics

## Super Specialties

- Cardiology
- Cardiothoracic Surgery
- Neurology
- Neurosurgery
- Nephrology
- Urology
- Paediatric Surgery
- Oncology & Onco Surgery
- Radiotherapy
- Endocrinology
- Medical & Surgical Gastroenterology
- Plastic Surgery
- Breast & Endocrine Surgery
- Nuclear Medicine & Theranostics
- Fertility & Reproductive Medicine
- Craniofacial Surgery

## Nitte Centre for Integrative Medicine & Research (CIMR)

This Centre combines Yoga, Meditation, Ayurveda and Naturopathy (AYUSH) with science, to provide clinical services and research on lifestyle and gut-related disorders. The Centre provides yoga, ayurveda and naturopathy based integrative therapy for a variety of lifestyle diseases. In addition, lectures / workshops on diet and nutrition are held to educate individuals on health and fitness. Prevention, cure and rehabilitation through integrative medicine is the Nitte CIMR's mission.





# Other Facilities

- Regular and air-conditioned rooms and suites
- Special clinic - 8 am to 5 pm
- Patient care and Counselling cell
- Sleep study and day-care facilities
- Uninterrupted Oxygen supply with dedicated PSA O<sub>2</sub> plant
- 18 modern operation theatres with advanced life-saving facilities
- Fully equipped 120-bed closed ICU, ICCU, NICU, PICU, SICU and Burns Unit
- 24-hour Emergency and Trauma Centre with attached OT, diagnostic and life support systems like ultrasound, x-ray, ventilators and monitors
- 24-hour clinical laboratory (NABL accredited), blood bank and pharmacy services
- Advanced Cardiac Cath lab and Dialysis unit
- Organ transplant services
- 1.5 Tesla MRI unit, Spiral C-Arm with IITV and fluoroscopy, 128 & 16 Slice CT, Slice 4D Ultrasound with colour doppler, Computed & Digital Radiography and Mammography with 3D Tomosynthesis
- Centre for Cancer Treatment and Research
- IVF Centre for Assisted Reproductive Therapy
- Centre for Craniofacial Surgery
- Advanced Neurology Lab
- Comprehensive Tissue Bank
- PET/CT





# Super Specialty Departments



## Cardiology

- Non-invasive procedures: 4D Transthoracic and 4D Transesophageal Echocardiography, TMT, Holter, ECG and Ambulatory BP
- Diagnostic & therapeutic interventional procedures: Coronary & peripheral angiograms, Coronary & peripheral angioplasties, Carotid angioplasties, Pericardiocentesis, Embolization procedures and Renal interventions
- Congenital heart disease interventions: Device implantation of ASD, VSD, PDA & others
- Electrophysiology studies, Pacemaker implantation, Cardiac resynchronization therapy & Implantable Cardioverter Defibrillator (ICD)
- Valvuloplasty and TAVR
- Stent graft placement for aortic aneurysms and aortic dissections



## Cardiovascular Thoracic Surgery

### Cardiac Surgeries

- Coronary artery bypass graft
- Aortic valve replacement
- Mitral valve replacement / repair
- Tricuspid valve repair
- Double valve replacement
- Repair of ASD and VSD
- Repair of Cyanotic congenital heart disease
- Repair of aortic aneurysm
- Surgery heart failures





## Thoracic Surgeries

- Lung resections
- Decortication
- Resection of Mediastinal tumours
- Repair of eventration diaphragm
- Excision of chest wall tumours



## Vascular Surgeries

- Aortobifemoral grafting
- Femoral popliteal grafting
- Repair of aneurysm
- Endovascular Aneurysm Repair (EVAR)



## Nephro Urology

- Modern haemodialysis unit and a renal ICU
- Renal transplants
- Laser Prostatectomy
- Laser Lithotripsy
- URS (Ureterorenoscopy) and endoscopic surgery to remove ureteral stones
- Transurethral surgeries to remove prostate and bladder tumours and AV fistula surgery for dialysis patients



## Paediatric Surgery

- Neonatal surgeries
- Paediatric urology
- Specialized laparoscopic setup for paediatric abdominal and thoracic surgery
- State-of-the-art Neonatal Intensive Care Unit (NICU) and Paediatric Intensive Care Unit (PICU)



## Nuclear Medicine

- PET/CT
- Dual head gamma camera
- Radionuclide therapy
- Nuclear medicine stress test





## Neurology

- Epilepsy Clinic
- Movement Disorder Clinic
- EEG machine and electrophysiology equipment
- Multiple Sclerosis Research Unit
- Advanced Neurological Research Centre



## Neurosurgery

- Neuro OT with C-arm, microscope, neuro endoscope & state-of-the-art equipment for minimally invasive and stereotactic surgeries supported by a full-fledged Neuro-ICU (NRICU)
- Surgeries to treat brain tumours, aneurysms, complex spine surgeries, endoscopic brain and spinal disorder



## Oncology

- Integrated Cancer Centre catering to all needs of cancer patients
- Comprehensive cancer care including advanced Radiotherapy treatment, Medical Oncology
- Surgical Oncology and Palliative care



## Radiation Oncology

- Two-Dimensional Radiotherapy (2DRT)
- Three-Dimensional Radiotherapy (3DCRT)
- Intensity Modulated Radiotherapy (IMRT)
- Image Guided Radiotherapy (IGRT)
- Rapid ARC Radiotherapy
- PET/CT



## Surgical Oncology



## Medical Oncology

- Chemotherapy (OP and IP basis)
- Bone marrow aspiration and biopsy
- Bone marrow transplant
- Immunotherapy (OP and IP basis)
- Intrathecal chemotherapy
- Head & Neck Onco surgery
- Musculoskeletal surgery
- Breast and Endocrine Surgery
- Thoracoscopic (VATS) Surgery: Oesophageal cancer, Lung and Mediastinal tumours
- Laparoscopic Surgery: Stomach, Pancreas, Colorectal, Gynaecological & Urological cancers
- Intersphincteric resection (ISR): Sphincter preserving surgery for low rectal cancer



## Endocrinology

- Diabetes care program for retinopathy, nephropathy, neuropathy, ischemic heart disease and management of gestational diabetes
- Paediatric diabetes clinic
- Treatment for obesity and lipid disorders, metabolic bone disease, disorders of the ovaries and testes, endocrine disorders of infertility, hirsutism, parathyroid and adrenal disorders



## Plastic Surgery

- Repair and reconstructive surgeries
- Microvascular surgery
- Cosmetic surgery
- Burn management
- Diabetic foot management
- Congenital deformities correction



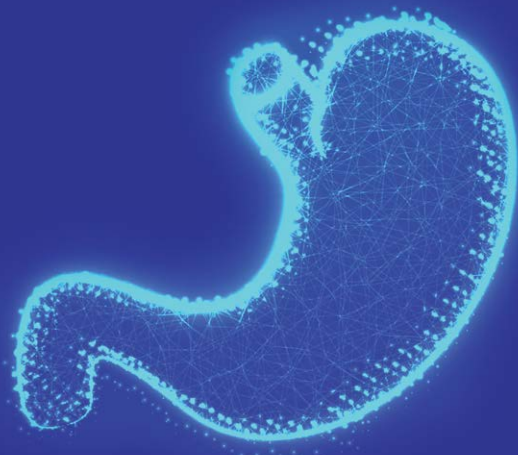
## Craniofacial Surgery

- Treatment of cleft and craniofacial anomalies and rhinoplasty
- Cleft and craniofacial care through treatment related to paediatrics, pedodontics, orthodontics and speech therapy



## Medical Gastroenterology & Hepatology

- Endoscopic Retrograde Cholangiopancreatography (ERCP): Detection & treatment of pancreatic & biliary disease
- Endoscopic Ultrasonography (EUS): Detection & Surveillance of pancreatic & biliary cancer
- Upper GI Endoscopy: Esophageal and Gastric cancer detection & surveillance
- Colonoscopy: Colon cancer detection & surveillance
- Therapeutic Endoscopy: Endoscopic removal of polyps in stomach, colon & rectum
- Cystogastrostomy for pancreatic pseudocyst
- Stenting for Advanced Oesophageal, Gastroduodenal, Biliary, Pancreatic and Colonic cancers
- Argon plasma coagulation for haemostasis and fulguration of unresectable tumours
- Oesophageal & anorectal manometry
- 24-hour pH impedance testing







## Surgical Gastroenterology & Hepato-Pancreato-Biliary Surgery

- Liver resections for tumours/cancers
- Liver transplantation
- Pancreatic surgeries for cancer/tumours and chronic pancreatitis
- Laparoscopic surgeries for cancer and non-cancerous diseases of oesophagus, stomach, small & large intestines and rectum
- Advanced laparoscopic surgeries for Gastroesophageal Reflux Disease (GERD), hiatal hernia and achalasia cardia
- Laparoscopic surgeries for gallstones, spleen and pancreas
- Laparoscopic weight loss/bariatric surgeries

## Specialty Departments



### General Medicine

- Modern diagnostic equipment and facilities like ICU and ICCU with monitors, ventilators & defibrillators
- Speciality clinics for diabetes, hypertension and geriatrics



### General Surgery

- Well-equipped modern operating theatres
- Latest instruments and equipment such as laparoscopes and endoscopes
- Routine procedures as well as advanced laparoscopic, thoracoscopic, gastrointestinal, hepatobiliary and pancreatic surgeries



### Orthopaedics

- Tissue Bank to support bone grafts, tendon grafts, amnion and skin grafts
- Trauma care
- Complete arthroscopy instruments for keyhole surgeries
- Robotic hip and knee replacement surgeries



## Ophthalmology

- Equipped with Slit Lamps, A-scan and Humphrey Field Analyser
- 24-hour eye bank
- Speciality clinics for cataract surgery and retinal defects
- Corneal transplant



## Otorhinolaryngology

- Treatment of tumours and cancers of the head and neck area and skull base surgery
- Micro-ear surgery, cochlear implant, micro-laryngeal surgery, endoscopic sinus surgery, video laryngoscopy, rigid and flexible bronchoscopy & esophagoscopy equipped with stroboscopy for diagnosing voice disorders & electronystagmography



## Obstetrics & Gynaecology

- Fertility clinic - IVF clinic for Assisted Reproductive Therapy
- Cancer screening
- High-risk pregnancy management
- Menopause clinic



## Respiratory Medicine

- Anti-tubercular treatment (DOTS)
- Treatment of naso bronchial allergy and asthma
- Pulmonary function test and arterial blood gas analysis
- Bronchoscopy
- Sleep lab
- Endoscopic Bronchial Ultrasonography



## Paediatrics

- Fully-equipped Neonatal Intensive Care Unit (NICU)
- Paediatric Intensive Care Unit (PICU)
- Epilepsy clinic, high-risk new-born clinic, development clinic, asthma clinic, well-baby & immunization clinic
- Special nephrology and nephro-urology clinic
- Genetic counselling, Genetics lab



## Dermatology

- Diode Laser for permanent hair reduction
- CO2 Laser for acne scar treatment, skin resurfacing and keloid treatment
- Spectra XT Laser for melasma treatment, tattoo, birthmark and mole removal
- Phototherapy unit
- Dermato-surgical procedures: Biopsies, surgeries for vitiligo & cryosurgery



## Radiodiagnosis

- 1.5 Tesla MRI unit
- 128 Slice MDCT scan with CT angiogram & 3D reconstruction facilities
- PET/CT
- 16 Slice MDCT scan with CT angiogram & 3D reconstruction facilities
- C-arm with image intensifier
- 4D Ultrasound with colour doppler unit
- Mammography unit with 3D tomosynthesis
- 6 X-ray machines
- 800 mA unit with IITV and fluoroscopy
- Digital Radiography





# Programs at Nitte

COLLEGES	PROGRAMS OFFERED
<b>NMAM Institute of Technology (Nitte)</b>	BTech: Artificial Intelligence & Data Science   Artificial Intelligence & Machine Learning   Biotechnology   Civil   Computer & Communication   Computer Science   Computer Science (Cyber Security)   Electrical & Electronics   Electronics & Communication   Electronics & Communication (Advanced Communication Technology)   Electronics (VLSI Design & Technology)   Information Science   Mechanical   Robotics & Artificial Intelligence   MTech   MCA   PhD
<b>Nitte Meenakshi Institute of Technology (Bengaluru)</b>	BTech: Artificial Intelligence & Data Science   Artificial Intelligence & Machine Learning   Aeronautical   Civil   Computer Science   Computer Science & Business Systems   Electrical & Electronics   Electronics & Communication   Electronics (VLSI Design & Technology)   Information Science   Mechanical   Robotics & Artificial Intelligence*   MTech   MCA   MBA   PhD BSc (Honors): Civil Aviation Pilot Training   Civil Aviation Flight Dispatcher
<b>K S Hegde Medical Academy (Mangaluru)</b>	MBBS   MD.MS   MCh   PhD MPH (Public Health)   MHA (Hospital Admn) Fellowship: Interventional Pulmonology   Neuroimmunology PG Diploma: Computed Tomography Technology   MRI Technology MSc: Clinical Embryology BSc & MSc: Anaesthesia & OT Technology   Medical Imaging Technology   Medical Lab Technology   Respiratory Therapy BSc: Renal Dialysis Technology   Radiation Therapy Technology
<b>A B Shetty Memorial Institute of Dental Sciences (Mangaluru)</b>	BDS   MDS   Fellowship in Oral Implantology   PhD
<b>NGSM Institute of Pharmaceutical Sciences (Mangaluru)</b>	DPharm   BPharm   PharmD   PharmD (PB)   MPharm   PhD
<b>Nitte College of Pharmaceutical Sciences (Bengaluru)</b>	BPharm   MPharm

<b>Nitte Usha Institute of Nursing Sciences (Mangaluru)</b>	GNM   PB BSc Nursing   BSc Nursing   MSc Nursing   PhD
<b>Nitte Institute of Physiotherapy (Mangaluru)</b>	BPT   MPT   PhD
<b>Nitte Institute of Speech &amp; Hearing (Mangaluru)</b>	B.ASLP (Audiology & Speech-Language Pathology) MSc: Speech-Language Pathology   Audiology   PhD
<b>Nitte University Centre for Science Education &amp; Research (Mangaluru)</b>	BSc (Honors) Biomedical Science MSc by Research MSc: Biomedical Science   Cancer Biology   Food Safety & Biotechnology   Microbiology   Biotechnology   Marine Biotechnology   PhD
<b>Nitte Institute of Architecture (Mangaluru)</b>	BArch
<b>Nitte School of Architecture, Planning &amp; Design (Bengaluru)</b>	BArch   BPlan   BDes   MPlan
<b>Nitte Institute of Communication (Mangaluru)</b>	BA (Honors) Media & Communication   PhD
<b>Nitte Institute of Hospitality Services (Mangaluru)</b>	BSc (Honors) Hotel Management BSc (Honors) Culinary Arts & Management BSc (Honors) Airlines, Tourism & Hospitality
<b>Justice K S Hegde Institute of Management (Nitte)</b>	MBA   PhD
<b>Nitte School of Management (Bengaluru)</b>	PG Diploma in Management

<p><b>Nitte School of Fashion Technology &amp; Interior Design (Bengaluru)</b></p>	<p>Diploma: Fashion Design   Interior Design BDes: Fashion Design   Interior Design MDes: Fashion Design   Interior Design</p>
<p><b>Dr NSAM First Grade College (Nitte)</b></p>	<p>BCA   BSc (Data Analytics)   BCom (General   Professional) BBA (General   Business Analytics   Logistics &amp; Supply Chain Management)   PhD</p>
<p><b>Nitte Institute of Professional Education (Mangaluru)</b></p>	<p>BCA (Artificial Intelligence &amp; Machine Learning   Cyber Security &amp; Digital Forensics   Cloud Technology &amp; DevOps) BBA (Business Analytics   International Business   Banking, Financial Services &amp; Insurance)</p>
<p><b>Dr NSAM First Grade College (Bengaluru)</b></p>	<p>BBA (General   Aviation Management)   BCom (General   Logistics &amp; Supply Chain Management   Business Data Analytics)   BCA</p>
<p><b>Nitte Rukmini Adyanthaya Memorial Polytechnic (Nitte)</b></p>	<p>Diploma in Engineering: Civil   Computer Science   Electrical &amp; Electronics   Electronics &amp; Communication   Mechanical   Apparel Design &amp; Fabrication Technology</p>

[apply.nitte.edu.in](https://apply.nitte.edu.in)





# Mastering Movement: Empowering Future

**The Director (Administration)**  
Nitte (Deemed to be University)  
Medical Sciences Complex, Deralakatte,  
Mangaluru - 575 018, Karnataka, India

☎ 95131 88844 | 94808 12312  
info@nitte.edu.in | nitte.edu.in | @ f y in

Scan to Apply Now

