

# NGSM INSTITUTE OF PHARMACEUTICAL SCIENCES

Paneer Campus, Deralakatte, Mangaluru - 575 018, Karnataka, India

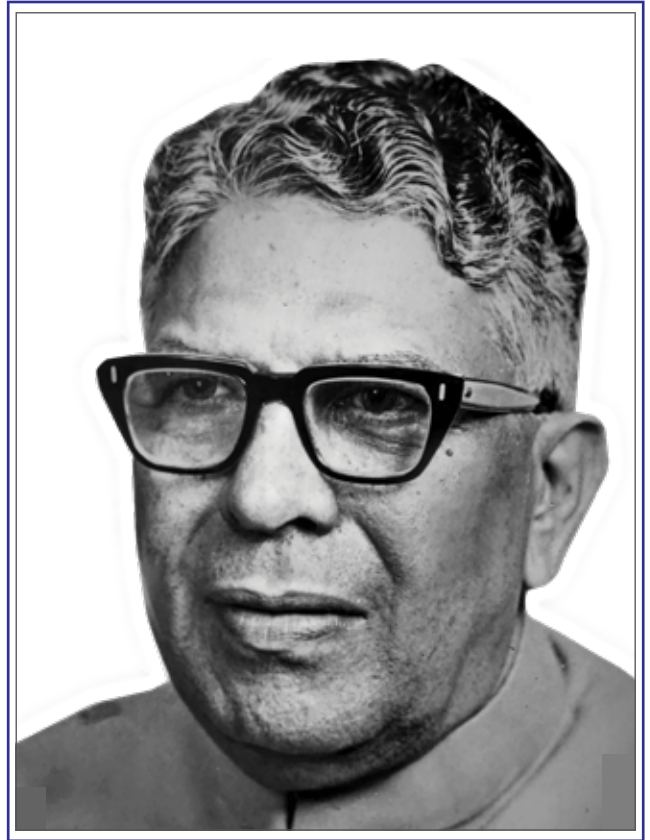


**40** years  
and growing

# **Justice K S Hegde**

**(1909 - 1990)**

Founder



## **About the Management**

Nitte Education Trust was founded in 1979 by Late Justice K S Hegde, former Judge of the Supreme Court of India and Speaker of the Lok Sabha.

Justice Hegde strongly believed that education was pivotal to the overall progress of a community and this vision led to the birth of Nitte Education Trust.

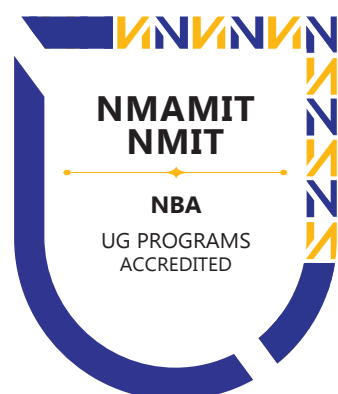
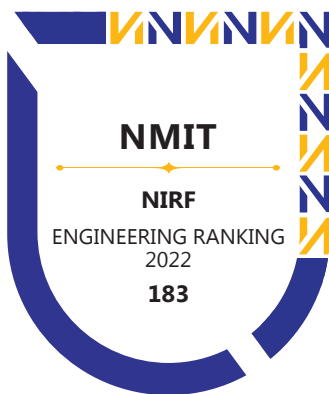
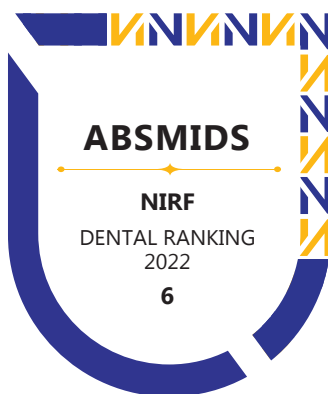
His legacy is being continued by his son, Mr N Vinaya Hegde.

## **About Nitte (Deemed to be University)**

Nitte University has been ranked among the top 100 Universities in India, consistently for the last four years, in the National Institutional Ranking Framework (NIRF) by the Ministry of HRD, GoI and is accredited with A+ Grade by the National Assessment and Accreditation Council of India (NAAC).

The University offers undergraduate, postgraduate and doctoral programs in a variety of disciplines. International affiliations, encouragement to academic research, a strong emphasis on sustainability and a healthy student connect are the hallmarks of this growing university.

# HALL OF FAME



# NGSM INSTITUTE OF PHARMACEUTICAL SCIENCES

## ABOUT THE INSTITUTION

Nitte Gulabi Shetty Memorial Institute of Pharmaceutical Sciences (NGSMIPS) established in 1983, is recognized by the Pharmacy Council of India and the All India Council for Technical Education, New Delhi. The college is ranked 45<sup>th</sup> in the National Institutional Ranking Framework (NIRF) 2022 by MHRD, GoI. The B.Pharm program is accredited by the National Board of Accreditation (NBA).

The college offers DPharm, BPharm, MPharm, PharmD, PharmD (PB) and PhD programs.





## FACULTY

### Principal

Prof. (Dr) CS Shastry, MPharm, PhD has more than 3 decades of undergraduate and postgraduate teaching experience and 6 years of industry experience.

The complete list of teaching faculty is available at [www.ngsmips.nitte.edu.in](http://www.ngsmips.nitte.edu.in)

## PROGRAMS

### D.PHARM

Intake: 60 | Duration: 2 years

#### Eligibility

Pass in 10+2 examination with Physics, Chemistry and Biology / Mathematics. The candidate should have completed 17 years of age as on 31<sup>st</sup> December of the year of admission.

#### Course Content

I Year: Pharmaceutics, Pharmaceutical Chemistry, Pharmacognosy, Human Anatomy & Physiology, Social Pharmacy.

II Year: Pharmacology, Community Pharmacy & Management, Biochemistry & Clinical Pathology, Pharmacotherapeutics, Hospital & Clinical Pharmacy, Pharmacy Law & Ethics.

### B.PHARM

Intake: 100 | Duration: 4 years (8 semesters)

#### Eligibility

Pass in 10+2 examination with not less than 45% marks in aggregate in Physics, Chemistry and Biology / Mathematics with English as one of the languages of study. The candidate should have completed 17 years of age as on 31<sup>st</sup> December of the year of admission.

#### Course Content

Semester I: Human Anatomy and Physiology I, Pharmaceutical Analysis, Pharmaceutics, Pharmaceutical Inorganic Chemistry, Communication skills, Remedial Biology / Remedial Mathematics.

Semester II: Human Anatomy and Physiology II, Pharmaceutical Organic Chemistry I, Biochemistry, Pathophysiology, Computer Applications in Pharmacy, Environmental Sciences.

Semester III: Pharmaceutical Organic Chemistry II, Physical Pharmaceutics I, Pharmaceutical Microbiology, Pharmaceutical Engineering.

Semester IV: Pharmaceutical Organic Chemistry III, Medicinal Chemistry I, Physical Pharmaceutics II, Pharmacology I, Pharmacognosy & Phytochemistry I.

Semester V: Medicinal Chemistry II, Industrial Pharmacy I, Pharmacology II, Pharmacognosy & Phytochemistry II, Pharmaceutical Jurisprudence.

Semester VI: Medicinal Chemistry III, Pharmacology III, Herbal Drug Technology, Biopharmaceutics and Pharmacokinetics, Pharmaceutical Biotechnology, Pharmaceutical Quality Assurance.

Semester VII: Instrumental Methods of Analysis, Industrial Pharmacy II, Pharmacy Practice, Novel Drug Delivery System, Practice School.

Semester VIII: Biostatistics and Research Methodology and Social & Preventive Pharmacy.

**Elective core subjects (any two):** Pharma Marketing Management, Pharmaceutical Regulatory Science, Pharmacovigilance, Quality Control and Standardizations of Herbals, Computer Aided Drug Design, Cell & Molecular Biology, Cosmetic Science, Pharmacological Screening Methods, Advanced Instrumentation Techniques, Dietary Supplements and Nutraceuticals, Pharmaceutical Product Development and Project Work.

## **B.PHARM (LATERAL ENTRY)**

Intake: 10 | Duration: 3 years (6 semesters)

### **Eligibility**

Pass in D.Pharm course with at least 45% marks.

### **Course Content**

Refer to semester III to semester VIII under B.Pharm.

## **PHARM.D**

Intake: 30 | Duration: 6 years (inclusive of 1-year internship)

### **Eligibility**

Pass in 10+2 with Physics, Chemistry and Mathematics / Biology with English as one of the languages of study or a Pass in D.Pharm from an institution approved by the PCI under Section 12 of the Pharmacy Act. The candidate should have completed 17 years of age as on 31<sup>st</sup> December of the year of admission.

### **Course Content**

I Year: Human Anatomy & Physiology, Pharmaceutics, Medicinal Biochemistry, Pharmaceutical Organic Chemistry, Pharmaceutical Inorganic Chemistry, Remedial Mathematics / Biology, Constitution of India.

II Year: Pathophysiology, Pharmaceutical Microbiology, Pharmacognosy & Phytopharmaceuticals, Pharmacology I, Community Pharmacy, Pharmacotherapeutics.

III Year: Pharmacology II, Pharmaceutical Analysis, Pharmacotherapeutics II, Pharmaceutical Jurisprudence, Medicinal Chemistry, Pharmaceutical Formulations.

IV Year: Pharmacotherapeutics III, Hospital Pharmacy, Clinical Pharmacy, Biostatistics & Research Methodology, Biopharmaceutics & Pharmacokinetics, Clinical Toxicology.

V Year: Clinical Research, Pharmacoepidemiology & Pharmacoeconomics, Clinical Pharmacokinetics & Pharmacotherapeutic Drug Monitoring, Clerkship, Project Work.

VI Year: Internship or Residency Training including postings in speciality units. Students should independently provide clinical pharmacy services to the allotted wards.

## PHARM.D (POST BACCALAUREATE)

Intake: 10 | Duration: 3 years (inclusive of 1-year internship)

### Eligibility

Pass in BPharm from an institution approved by the PCI under Section 12 of the Pharmacy Act.

### Course Content

Refer IV to VI year under PharmD

## M.PHARM

Intake: 90 | Duration: 2 years

### Specializations

- Pharmaceutical Chemistry (15)
- Pharmacology (15)
- Pharmaceutics (15)
- Pharmaceutical Regulatory Affairs (15)
- Quality Assurance (15)
- Pharmacy Practice (15)

### Eligibility

Pass in B.Pharm from a recognized University, securing not less than 55% marks in aggregate of all the four years of study.





## Admission Procedure

Students seeking admission to the DPharm / BPharm / PharmD / MPharm programs are required to submit the Admission Query form available on [apply.nitte.edu.in](https://apply.nitte.edu.in)

On receipt of the same, the Admission Section will guide students with the process of registration and admission.

Admission to the above programs is based on merit in the qualifying examination.

The fee structure is available on our website [www.nitte.edu.in](https://www.nitte.edu.in) under the head 'Program Fee.'

## Documents required for admission to D.Pharm / B.Pharm / Pharm.D

Class 10 marks card (Original + 3 attested copies)

Class 12 marks card (Original + 3 attested copies)

Diploma marks card and Diploma Certificate [for DPharm candidates only] (Original + 3 attested copies)

Registration Certificate of the Pharmacy Council [for DPharm candidates only] (Original + 3 attested copies) - to be produced within six months of admission

Transfer Certificate from the institution last attended (Original + 3 attested copies)

Conduct Certificate from the institution last attended (Original)

Eligibility Certificate issued by Nitte University (This will be handled by Nitte)

Migration Certificate from the Board of the institution last attended (Original)

Physical fitness certificate from a registered medical practitioner

Blood group certificate

Aadhaar card copy of the student

Photographs: Recent colour photo with white background, resolution 300-600 dpi  
Passport size 5 Nos. (35mm x 45mm) & Stamp size 5 Nos. (20mm x 25mm)

## Documents required for admission to Pharm.D (PB)/M.Pharm

Class 10 marks card (Original + 3 attested copies)

B.Pharm marks cards of 4 years (Original + 3 attested copies)

Degree Certificate issued by the University (Original + 3 attested copies)

Industrial Training Certificate (Original + 3 attested copies)

Registration Certificate from the Pharmacy Council (Original + 3 attested copies) to be produced within six months of admission.

Transfer Certificate from the institution last attended (Original + 3 attested copies)

Conduct Certificate from the institution last attended (Original)

Eligibility Certificate issued by Nitte University (This will be handled by Nitte)

Migration Certificate from the University last attended (Original)

Physical fitness certificate from a registered medical practitioner

Blood group certificate

Aadhaar card copy of the student

Photographs: Recent colour photo with white background, resolution 300-600 dpi  
Passport size 5 Nos. (35mm x 45mm) & Stamp size 5 Nos. (20mm x 25mm)

## Commencement of Classes

DPharm / BPharm / PharmD / MPharm programs commence on the date prescribed by the University, generally in August.

## Ph.D

The University offers Doctoral program in Pharmaceutical Sciences. The pharmacy postgraduates in any specialisation are eligible to apply for full-time (3 years) or part-time (4 years) PhD.

## Career Opportunities

The pharmaceutical industry, one of the largest employers of human resources the world over, offers challenging and rewarding career opportunities. Pharmacy education in India, which was focusing on the manufacturing of drugs and pharmaceuticals till the first half of the first decade of the twenty-first century, diversified into the area of patient care - the ultimate beneficiary of drug development. These two different streams provide skilled human resources to the manufacturing and patient care sectors.

Thus, a career in Pharmaceutical Sciences offers a unique opportunity in drug discovery, testing, formulation development and patient care. Pharmacy graduates can find exciting career opportunities in the following areas:

- **Pharmaceutical Industry:** Manufacturing & Production, Quality Control, Quality Assurance, Research & Development, Clinical Research, Contract Research Organizations, Contract Research and Manufacturing Services (CRAMS), Regulatory Affairs & IPR, Sales & Marketing, Bioinformatics and Medical Transcriptionist.
- **Government Regulatory Bodies:** Food & Drug Administration / Drug Control Department Drug Inspectors, Clinical Trial Inspector.
- **Academics:** Teaching & Research
- Investigation and Research Institutes
- **Hospital Pharmacy:** Government or Private Hospitals, Tertiary and Teaching Hospitals, Primary Health Centres, Community Health Centres.
- Wholesale / Pharmaceutical Distributors
- **Community Pharmacy or Retail Pharmacy:** Medical stores, Chemists & Druggists, OTC Chain stores, 'Jan Aushadhi' project of the Govt. of India.

## Our Recruiters

The Institute-Industry Collaboration & Placement Cell (IICP) has an excellent rapport with the following pharmaceutical companies which extend professional and technical support and also recruit our students.

Syngene | Biocon | IQVIA | Parexel | Indegene | GSK | MERCK | Freyr Solutions | PPD | Pfizer | ICON plc | Sun Pharmaceuticals | Lotus Teva | Labcorp | Celegence | Micro Labs | Medreich | Atrimed | Viartis | Group Pharma | Embiotic | Bioclinica | Ecron Acunova | Eli Lilly | Strides Arcolab | Sami Labs | Juggat Pharma | Synergia Bio Sciences | Accenture | Apollo Hospitals | Sanofi Aventis | Indoco Remedies | Blue Cross Laboratories | Win-Medicare | Ahilya Hospital, Abu Dhabi | Oman Clinical Pharmacy | Lifecare Pharmacy, Dubai | Oxford Hospital, Abu Dhabi | Neopharma, Abu Dhabi | Aster Pharmacy, Bur Dubai | Trichur Heart Hospital | MUM Hospital | Medorganics, Mangaluru | Prakruti Life Science, Udupi etc.

## FACILITIES

### Student Training



The Pharm.D and Pharmacy Practice students are trained extensively in different departments at Justice K S Hegde Charitable Hospital (an NABH accredited, 1200-bed multi-speciality hospital). This gives them a better understanding of the treatment regimen, patient care, etc.

### State-of-the-art Infrastructure

The college houses advanced research laboratories like the Institutional Research Laboratory, Central Research Laboratory, Advanced Instrumentation Centre, CADD Lab, Nano Science Laboratory and Cell Culture Laboratory. A separate ADR Monitoring Cell and Patient Counselling Centre have also been established at the hospital.



### Animal House for Pre-clinical Research and Services



In order to offer pre-clinical research services to industry and academia, the college has set up a 5000 sq.ft. dedicated “Nitte University Centre for Animal Research & Experimentation” (NUCARE). The Centre conducts preclinical studies such as Toxicology Studies, Pharmacokinetic Studies, Efficacy Studies, Medical Device Testing, Quality Control etc.

### Medicinal Garden

The college has a well-maintained arboretum – a medicinal and botanical garden with important plant species labelled with their therapeutic values.

This acquaints students with necessary skills such as Botanical – Morphological and Anatomical Studies, Physical Fluorescence Studies and Chemical Phytochemical Studies to enable them to learn and fulfil responsibilities as experts on drug-related issues.





## Library



The college has a spacious library with a large collection of over 13,699 volumes, 4167 titles, 1849 e-journals and subscribes to more than 47 national and international journals. The library provides free access to valuable information through cross-disciplinary research tools like Pro Quest, Helinet and Delnet to students, research scholars and faculty.

## Journal Club

The Journal Club provides a platform for students to critically evaluate recent articles in scientific literature. This improves their skills in technical writing, effective presentation in workshops, seminars, symposia and paper presentations. It also prepares students to face career challenges and gives them the confidence to assume new roles and responsibilities.



## Industry Training

The institution has tie-ups with renowned pharmaceutical companies and research centres to offer industrial training to students which will orient them with the corporate work culture and also help them comprehend and appreciate the practical application of theoretical concepts learned in the college.



## Industry Collaboration

The institution has signed MoUs with prominent pharmaceutical companies like Atrimed Inc. and Medreich for mutual assistance in the areas of research, placement and training. The college is also a member of the Karnataka Drugs and Pharmaceuticals Manufacturers Association (KDPMA), Bengaluru.

## Sports

The campus boasts of an air-conditioned gymnasium, a multi-purpose playground with a running track, basketball, volleyball and badminton courts. A full-time physical education teacher is available in the institute to train the students in sports activities.



## Placement and Training

An active and vibrant Institute-Industry Collaboration & Placement Cell (IICP) has been playing a catalytic role to bridge the gap and eliminate the disconnect that exists between the industry and academia and thereby meeting the objectives of all the stakeholders - students, industry, institute and society at large.

Pharmaceutical companies are regularly invited to conduct campus interviews. Guest lectures, workshops, seminars, conferences and symposia related to the syllabus and professional training programs outside the curriculum like industry orientation, training in soft skills, communicative English, building self-confidence and personality development are conducted regularly.

## Medicare

Students can avail medical and dental treatment at Justice K S Hegde Charitable Hospital and A B Shetty Dental College Hospital, located in the campus.



## Student Wellness Centre

The Wellness Centre aims to create a stress-free campus by promoting a healthy lifestyle and positive mental health among students. It provides mentoring and counselling services for students in a confidential and supportive environment. The trained staff of the Centre offer a helpline to students in distress and assist in resolving academic, personal and social concerns.

## Hostel

The college provides safe, secure, clean, and well-furnished hostel with hygienic food. The hostel mess is maintained by an app “Paaka-shale” which gives students the freedom to pre-book their favourite non-vegetarian dishes apart from their regular menu. Recreational facilities include indoor and outdoor games and television. A resident warden is available to ensure that students are safe. Healthcare requirements like doctor on-call facility to handle medical emergencies are available. The hostel has zero tolerance towards ragging, use of tobacco, and drug abuse. Security personnel are available round-the-clock in all the hostels.

## Conveyance

Free transport facilities are provided to students through a fleet of buses plying regularly from various locations in the city to the college and back. The campus also provides bicycles to commute within the campus. This is an initiative taken to maintain a healthy lifestyle and a green campus.





## JUSTICE K S HEGDE CHARITABLE HOSPITAL



The NABH accredited 1200-bed multi-speciality hospital, which serves as the teaching hospital for K S Hegde Medical Academy, is one of the leading speciality hospitals in Mangaluru. Situated about 14 km from the heart of the city of Mangaluru, it is a calm and ideal place for treatment. The hospital's mission is to provide quality treatment and healthcare at an affordable cost.

Equipped with all modern diagnostic and therapeutic facilities, the hospital conducts critical surgeries like valve replacement, bypass surgery, neonatal surgery, cancer surgery, pediatric surgery, cardiac surgery, laparoscopic surgery, arthroscopic surgery, joint replacement, complex spine and brain surgery, micro-laryngeal surgery and endoscopic sinus surgery.



## Broad Specialities

- General Medicine
- General Surgery
- Anaesthesiology
- Respiratory Medicine
- Orthopaedics
- Obstetrics & Gynaecology
- Paediatrics
- Psychiatry
- Dermatology, Venereology & Leprosy
- Ophthalmology
- Radiodiagnosis
- Otorhinolaryngology

## Clinical Facilities

- Emergency Medicine
- Physical Medicine and Rehabilitation
- Audiology
- Speech Therapy
- Physiotherapy
- Pharmacy Practice
- Nutrition & Dietetics

## Super Specialities

- Cardiology
- Cardiothoracic Surgery
- Neurology
- Neurosurgery
- Nephrology
- Urology
- Paediatric Surgery
- Oncology and Onco surgery
- Radiotherapy
- Endocrinology
- Medical and Surgical Gastroenterology
- Plastic Surgery
- Breast and Endocrine Surgery
- Craniofacial Surgery



**Nitte Centre for Integrative Medicine & Research** combines Yoga, Meditation, Ayurveda and Naturopathy (AYUSH) with science, to provide clinical services and research on lifestyle and gut-related disorders. Currently, the Centre provides Yoga, Ayurveda and Naturopathy based integrative therapy for a variety of lifestyle diseases. In addition, lectures / workshops on diet and nutrition are held to educate individuals on health and fitness. Prevention, cure and rehabilitation through integrative medicine this is the Nitte CIMR's mission.

## Other facilities

- Regular and air-conditioned rooms and suites
- Special Clinic - 8 am to 5 pm
- Patient care and Counselling cell
- Sleep study and Day-care facilities
- Uninterrupted oxygen supply with a dedicated PSA O<sub>2</sub> plant
- 18 modern Operation Theatres with advanced life-saving facilities
- Fully equipped 68-bed closed ICU, ICCU, NICU, PICU, SICU and Burns Unit
- 24-hour Emergency and Trauma Centre with attached OT, diagnostic and life support systems like ultrasound, X-Ray, ventilators and monitors
- 24-hour clinical laboratory (NABL accredited), blood bank and pharmacy services
- Advanced Cardiac Cath lab and Dialysis Unit
- Organ Transplant services
- 1.5 Tesla MRI unit, Spiral C-Arm with IITV and fluoroscopy, 128 & 16 Slice CT, Slice 4D Ultrasound with colour doppler, Computed & Digital Radiography and Mammography with 3D Tomosynthesis
- Centre for Cancer Treatment and Research
- IVF Centre for Assisted Reproductive Therapy
- Centre for Craniofacial Surgery
- Advanced Neurology Lab
- Comprehensive Tissue Bank

## Super Speciality Departments

### Cardiology

- Non-invasive procedures: 4D Transthoracic and 4D Transesophageal Echocardiography, TMT, Holter, ECG and Ambulatory BP.
- Diagnostic & therapeutic interventional procedures: Coronary & peripheral angiograms, Coronary & peripheral angioplasties, Carotid angioplasties, Pericardiocentesis, Embolization procedures and Renal interventions.
- Congenital heart disease interventions: Device implantation of ASD, VSD, PDA and others.
- Electrophysiology studies, Pacemaker implantation, Cardiac resynchronization therapy and Implantable Cardioverter Defibrillator implantation (ICD).
- Valvuloplasty and TAVR.
- Stent graft placement for aortic aneurysms and aortic dissections.

## Cardiovascular Thoracic Surgery

### Cardiac Surgeries

- Coronary artery bypass graft
- Aortic valve replacement
- Mitral valve replacement / repair
- Tricuspid valve repair
- Double valve replacement
- Repair of ASD and VSD
- Repair of Cyanotic congenital heart disease
- Repair of aortic aneurysm
- Surgery heart failures

### Thoracic Surgeries

- Lung resections
- Decortication
- Resection of Mediastinal tumours
- Repair of eventration diaphragm
- Excision of chest wall tumours

### Vascular Surgeries

- Aortobifemoral grafting
- Femo popliteal grafting
- Repair of aneurysm
- Endovascular aneurysm repair (EVAR)

### Nephro Urology

- Modern haemodialysis unit and a renal ICU
- Renal transplants
- Laser Prostatectomy
- Laser Lithotripsy
- URS (Ureterorenoscopy) and endoscopic surgery to remove ureteral stones
- Transurethral surgeries to remove prostate & bladder tumours and A-V fistula surgery for dialysis patients

### Paediatric Surgery

- Neonatal surgeries
- Paediatric urology
- Specialized laparoscopic set-up for paediatric abdominal and thoracic surgery
- State-of-the-art Neonatal Intensive Care Unit (NICU) and Paediatric Intensive Care Unit (PICU)



### Neurology

- Epilepsy Clinic
- Movement Disorder Clinic
- EEG machine and Electrophysiology equipment
- Multiple Sclerosis Research Unit
- Advanced Neurological Research Centre

### Neurosurgery

- Neuro OT with C-arm, microscope, neuro endoscope and state-of-the-art equipment for minimally invasive and stereotactic surgeries supported by a full-fledged Neuro-ICU (NRICU)
- Surgeries to treat brain tumours, aneurysms, complex spine surgeries, endoscopic brain and spinal disorder

### Oncology

- Integrated Cancer Centre catering to all needs of cancer patients
- Comprehensive cancer care including advanced Radiotherapy treatment, Medical Oncology
- Surgical Oncology and Palliative care







### Radiation Oncology

- Two-Dimensional Radiotherapy (2DRT)
- Three-Dimensional Radiotherapy (3DCRT)
- Intensity Modulated Radiotherapy (IMRT)
- Image Guided Radiotherapy (IGRT)
- Rapid ARC Radiotherapy

### Medical Oncology

- Chemotherapy (OP and IP basis)
- Bone marrow aspiration and Biopsy
- Bone marrow transplant
- Immunotherapy (OP and IP basis)
- Intrathecal chemotherapy

### Surgical Oncology

- Head & Neck Onco surgery
- Musculoskeletal surgery
- Breast and Endocrine Surgery
- Thoracoscopic (VATS) Surgery: Oesophageal cancer, Lung and Mediastinal tumours
- Laparoscopic Surgery: Stomach, Pancreas, Colorectal, Gynaecological and Urological cancers
- Intersphincteric resection (ISR): Sphincter preserving surgery for low rectal cancer

### Endocrinology

- Diabetes care program for retinopathy, nephropathy, neuropathy, ischemic heart disease and management of gestational diabetes
- Paediatric diabetes clinic
- Treatment for obesity and lipid disorders, metabolic bone disease, disorders of the ovaries and testes, endocrine disorders of infertility, hirsutism, parathyroid and adrenal disorders

### Craniofacial Surgery

- Treatment of cleft and craniofacial anomalies and rhinoplasty
- Cleft and craniofacial care through treatment related to paediatrics, pedodontics, orthodontics and speech therapy

### Plastic Surgery

- Repair and reconstructive surgeries
- Microvascular surgery
- Cosmetic surgery
- Burn management
- Diabetic foot management
- Congenital deformities correction

### Medical Gastroenterology & Hepatology

- Endoscopic Retrograde Cholangiopancreatography (ERCP): Detection & treatment of pancreatic and biliary disease
- Endoscopic Ultrasonography (EUS): Detection & Surveillance of pancreatic and biliary cancer
- Upper GI Endoscopy: Esophageal and Gastric cancer detection and surveillance
- Colonoscopy: Colon cancer detection and surveillance
- Therapeutic Endoscopy: Endoscopic removal of polyps in stomach, colon and rectum
- Cystogastrostomy for pancreatic pseudocyst
- Stenting for advanced oesophageal, gastroduodenal, biliary, pancreatic and colonic cancers
- Argon plasma coagulation for haemostasis and fulguration of unresectable tumours
- Oesophageal and anorectal manometry
- 24-hour pH impedance testing

### Surgical Gastroenterology & Hepato-Pancreato-Biliary Surgery

- Liver resections for tumours / cancers
- Liver transplantation
- Pancreatic surgeries for cancer / tumours and chronic pancreatitis
- Laparoscopic surgeries for cancer and non-cancerous diseases of the esophagus, stomach, small & large intestines and rectum
- Advanced laparoscopic surgeries for Gastroesophageal Reflux Disease(GERD), hiatal hernia and achalasia cardia
- Laparoscopic surgeries for gallstones, spleen and pancreas
- Laparoscopic weight loss / bariatric surgeries

## Speciality Departments

### General Medicine

- Modern diagnostic equipment and facilities like ICU and ICCU with monitors, ventilators and defibrillators
- Speciality clinics for diabetes, hypertension and geriatrics

### General Surgery

- Well-equipped modern operating theatres
- Latest instruments and equipment such as laparoscopes and endoscopes
- Routine procedures as well as advanced laparoscopic, thoracoscopic, gastrointestinal, hepatobiliary and pancreatic surgeries

### Orthopaedics

- Tissue Bank to support bone grafts, tendon grafts, amnion and skin grafts
- Trauma care
- Complete arthroscopy instruments for keyhole surgeries
- Hip and knee replacement surgeries

### Ophthalmology

- Equipped with Slit Lamps, A-scan and Humphrey Field Analyser
- 24-hour eye bank
- Speciality clinics for cataract surgery and retinal defects
- Corneal transplant

### Otorhinolaryngology

- Treatment of tumours and cancers of the head & neck area and skull base surgery
- Micro-ear surgery, cochlear implant, micro-laryngeal surgery, endoscopic sinus surgery, video laryngoscopy, rigid & flexible bronchoscopy and esophagoscopy equipped with stroboscopy for diagnosing voice disorders and electronystagmography

### Obstetrics & Gynaecology

- Fertility clinic - IVF clinic for Assisted Reproductive Therapy
- Cancer screening
- High-risk pregnancy management
- Menopause clinic

### Paediatrics

- Fully-equipped Neonatal Intensive Care Unit (NICU)
- Paediatric Intensive Care Unit (PICU)
- Epilepsy clinic, high-risk new-born clinic, development clinic, asthma clinic, well-baby and immunization clinic
- Special nephrology and nephro-urology clinic
- Genetic counselling, Genetics lab

### Respiratory Medicine

- Anti-tubercular treatment (DOTS)
- Treatment of naso bronchial allergy and asthma
- Pulmonary function test and arterial blood gas analysis
- Bronchoscopy
- Sleep lab
- Endoscopic Bronchial Ultrasonography

### Dermatology

- Diode Laser for permanent hair reduction
- CO2 Laser for acne scar treatment, skin resurfacing and keloid treatment
- Spectra XT Laser for melasma treatment, tattoo, birthmark and mole removal
- Phototherapy unit
- Dermato-surgical procedures – biopsies, surgeries for vitiligo and cryosurgery

### Radiodiagnosis

- 1.5 Tesla MRI unit
- 128 Slice MD CT scan with CT angiogram & 3D reconstruction facilities
- 16 Slice MD CT scan with CT angiogram & 3D reconstruction facilities
- C-arm with image intensifier
- 4D Ultrasound with colour doppler unit
- Mammography unit with 3D tomosynthesis
- 6 X-ray machines
- 800 mA unit with IITV and fluoroscopy
- Digital Radiography





## # HappeningatNitte



## COLLEGES

## PROGRAMS OFFERED

**NMAM Institute of Technology**  
(Nitte)

BTech: Artificial intelligence & Data Science |  
 Artificial Intelligence & Machine Learning | Biotechnology | Civil |  
 Computer & Communication | Computer Science | Electrical & Electronics |  
 Electronics & Communication | Information Science | Mechanical |  
 Robotics & Artificial Intelligence | Information Technology with Full Stack  
 Development specialization (Approval awaited)  
 MTech | MCA | MBA | PhD

**Nitte Meenakshi Institute of Technology**  
(Bengaluru)

BE: Artificial Intelligence & Data Science |  
 Artificial Intelligence & Machine Learning | Aeronautical | Civil |  
 Computer Science | Electrical & Electronics |  
 Electronics & Communication | Information Science | Mechanical  
 MTech | MCA | MBA | PhD

**K S Hegde Medical Academy**  
(Mangaluru)

MBBS | MD.MS | MCh | PhD | MPH (Public Health) |  
 MHA (Hospital Administration)  
 Fellowship Program in Interventional Pulmonology  
 PG Diploma: Computed Tomography Technology | MRI Technology  
 BSc & MSc: Anaesthesia & OT Technology | Medical Imaging Technology |  
 Medical Lab Technology | Respiratory Therapy  
 BSc: Renal Dialysis Technology | Radiation Therapy Technology

**A B Shetty Memorial Institute of Dental Sciences**  
(Mangaluru)

BDS | MDS | PhD | Fellowship Program in Oral Implantology

**NGSM Institute of Pharmaceutical Sciences**  
(Mangaluru)

DPharm | BPharm | PharmD | PharmD (PB) | MPharm | PhD

**Nitte College of Pharmaceutical Sciences**  
(Bengaluru)

BPharm

**Nitte Usha Institute of Nursing Sciences**  
(Mangaluru)

GNM | PB BSc Nursing | BSc Nursing | MSc Nursing | PhD

**Nitte Institute of Physiotherapy**  
(Mangaluru)

BPT | MPT | PhD

**Nitte Institute of Speech & Hearing**  
(Mangaluru)

B.ASLP (Audiology & Speech Language Pathology)  
 MSc: Speech Language Pathology | Audiology

**Nitte University Centre for Science Education & Research**  
(Mangaluru)

BSc (Honors) Biomedical Science  
 MSc: Biomedical Science | Food Safety & Biotechnology | Microbiology |  
 Biotechnology | Marine Biotechnology (DBT sponsored) | PhD

COLLEGES	PROGRAMS OFFERED
<b>Nitte Institute of Architecture</b> (Mangaluru)	BArch
<b>Nitte School of Architecture, Planning &amp; Design</b> (Bengaluru)	BArch   BPlanning
<b>Nitte Institute of Communication</b> (Mangaluru)	BA (Honors) Media & Communication   MA Media & Communication PG Diploma: Photography & Filmmaking   Advertising & PR
<b>Nitte Institute of Hospitality Services</b> (Mangaluru)	BSc (Honors) Hospitality Management   Culinary Arts & Management
<b>Justice K S Hegde Institute of Management</b> (Nitte)	MBA   PhD
<b>Nitte School of Management</b> (Bengaluru)	PG Diploma in Management
<b>Nitte School of Fashion Technology &amp; Interior Design</b> (Bengaluru)	BSc & MSc: Fashion & Apparel Design   Interior Design & Decoration Diploma: Fashion Design   Interior Design PG Diploma: Home Interiors   Fashion Styling & Image Management
<b>Dr NSAM First Grade College</b> (Nitte)	BCA   BSc (Data Analytics)   BCom (General   Professional) BBA (General   Logistics & Supply Chain Management   Business Analytics)
<b>Nitte Institute of Professional Education</b> (Mangaluru)	BCA (Artificial Intelligence   Cyber Security   Cloud Technology) BBA (Business Analytics   International Business   Banking & Financial Services)
<b>Dr NSAM First Grade College</b> (Bengaluru)	BCom   BBA   BA   BCA
<b>Nitte Rukmini Adyanthaya Memorial Polytechnic</b> (Nitte)	Diploma in Engineering: Civil   Computer Science   Electrical & Electronics   Electronics & Communication   Mechanical   Apparel Design & Fabrication Technology

### For further details, contact

---

The Director (Administration),  
Nitte (Deemed to be University),  
Medical Sciences Complex, Deralakatte,  
Mangaluru - 575 018, Karnataka, India

0824 2204 342/304  
+91 95131 88844 | 74118 07319 | 94808 12310

[info@nitte.edu.in](mailto:info@nitte.edu.in)  
[www.nitte.edu.in](http://www.nitte.edu.in)

